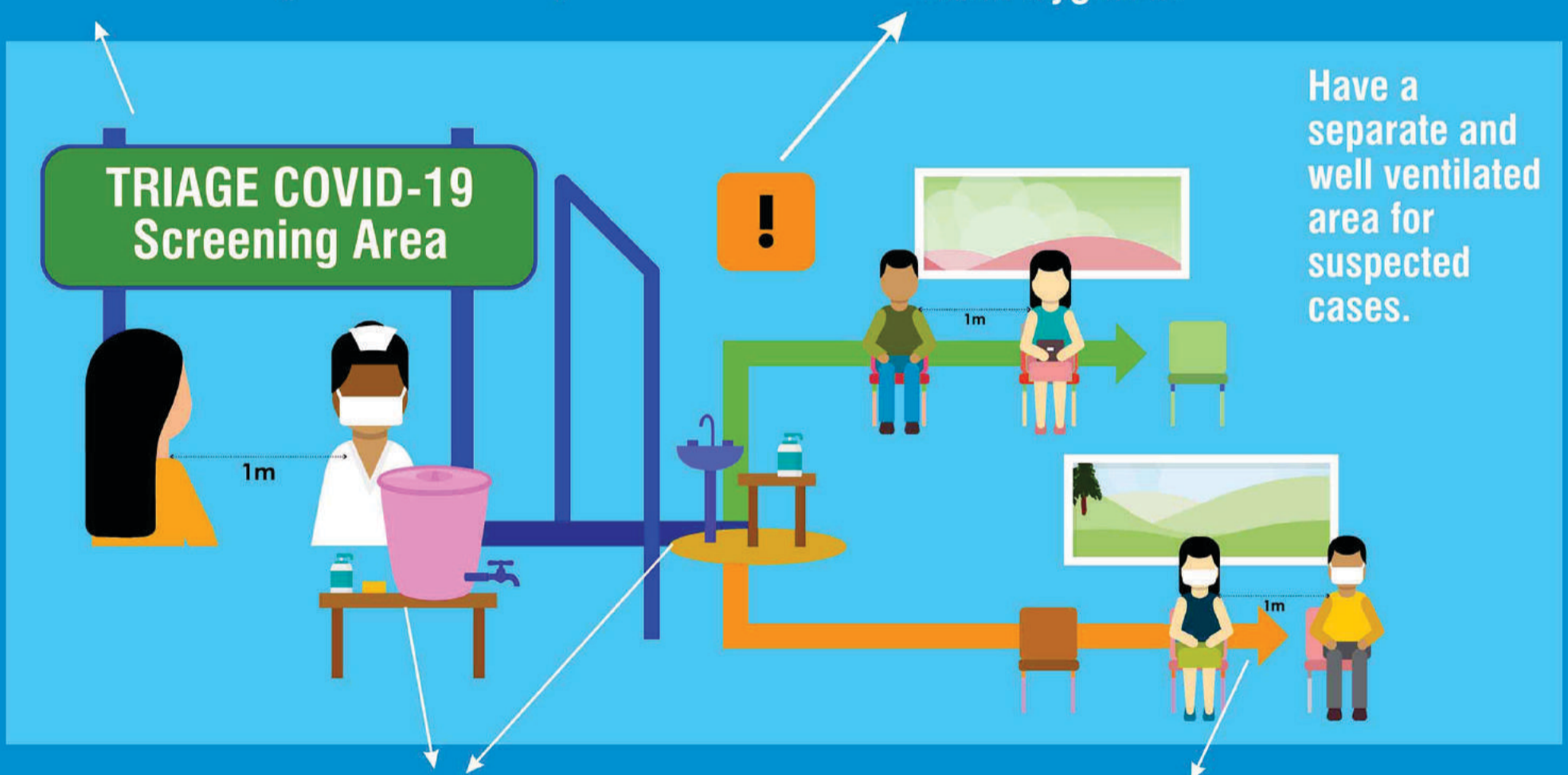


Novel Coronavirus Disease **COVID-19**

Is your healthcare facility ready to manage patients with COVID-19?

Establish a triage station at the healthcare facility entrance, prior to any waiting area, to screen patients with COVID-19. Entrance to triage should be separate.

Display information through posters and flyers to remind patients and visitors to practice good respiratory and hand hygiene.



Ensure availability of

- Alcohol-based hand rub or soap and water at hand washing stations
- Personal Protective Equipment (PPE)
- Essential Medicines

If you have fever, cough or breathing difficulties, move to a designated area. **Maintain 1-metre distance from those who have such symptoms.**

Any case with fever, cough or breathing difficulty with travel history from Coronavirus affected countries/areas or contact with suspected or confirmed COVID-19 patients, should be referred to designated hospitals.

Issue under Public Safety Initiative by

Indian Dental Association

Block No.6, 1st Floor, Sane Guruji Premises,
386, Veer Savarkar Road, Opp. Siddhivinayak Temple, Prabhadevi. Mumbai - 400 025 | www.ida.org.in